



Perry Vale, SE23 | £550,000

02087029444

foresthill@pedderproperty.com

pedder
We live local



In General

- Unique penthouse apartment
- Chain free
- Two roof terraces with stunning views
- Two double bedrooms
- Two bathroom suites
- Secure off-street parking with allocated space
- Close to transport links
- Very popular development
- 982 year lease
- Immaculate condition

In Detail

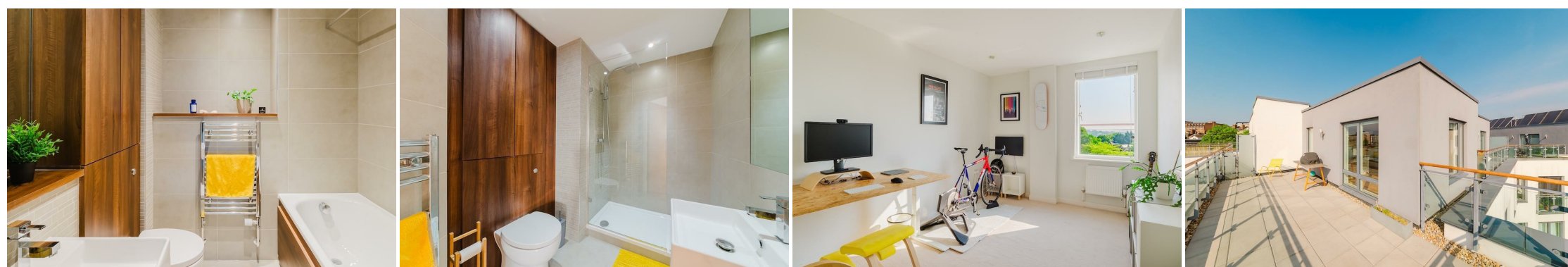
An incredible two bed, two bath penthouse apartment, complete with two private roof terraces for sale in the highly sought-after City Walk Development, set just seconds from Forest Hill station. Offered chain free and with a 982 year lease.

This exceptional apartment offers spacious and contemporary living, featuring two well-sized double bedrooms, two modern bathrooms (one en-suite), and a generous open-plan kitchen/reception room. The standout feature of this property is the large south-facing roof terrace. With panoramic views and all-day sun, it's a unique spot to relax and entertain. Additional highlights include smart lighting and heating, secure off-street parking with an allocated space, lift access and an immaculate fit and finish throughout.

Conveniently located less than 0.1 miles from Forest Hill station, this apartment benefits from excellent transport links into London Bridge, Canada Water, Shoreditch, Whitechapel, Highbury & Islington, and many other key destinations. The property is also surrounded by a wide range of local amenities, including restaurants, coffee shops, cafes, and the ever-popular Horniman Park and Museum.

Viewings are highly recommended, call the Pedder Forest Hill Sales team to arrange a viewing today.

EPC: B | Council Tax Band: D | Lease: 982 years remaining | SC: £3,700 pa | GR: £350 pa | BI: Nil



Floorplan

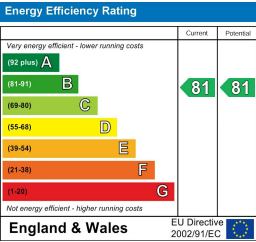
Perry Vale, SE23

Approximate Gross Internal Area
76.2 sq m / 820 sq ft



Fifth Floor

Copyright www.pedderproperty.com © 2018
These plans are for representation purposes only as defined by RICS - Code of Measuring Practice.
Not drawn to Scale. Windows and door openings are approximate. Please check all dimensions, shapes and compass bearings before making any decisions reliant upon them.



Pedder Property Ltd trading as Pedder for themselves and for the vendor/landlord of this property whose agents they are, give notice that (1) these particulars do not constitute any part of an offer or contract, (2) all statements contained within these particulars are made without responsibility on the part of Pedder or the vendor/landlord, (3) whilst made in good faith, none of the statements contained within these particulars are to be relied upon as a statement of representation or fact, (4) any intending purchaser/tenant must satisfy him/herself by inspection or otherwise as to the correctness of each of the statements contained within these particulars, (5) the vendor/landlord does not make or give either Pedder or any person in their employment any authority to make or give representation or warranty whatsoever in relation to this property.